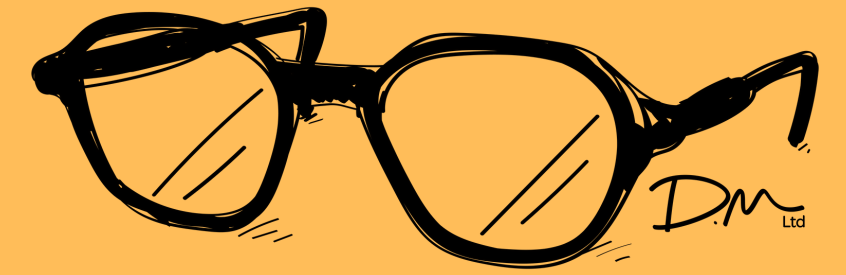


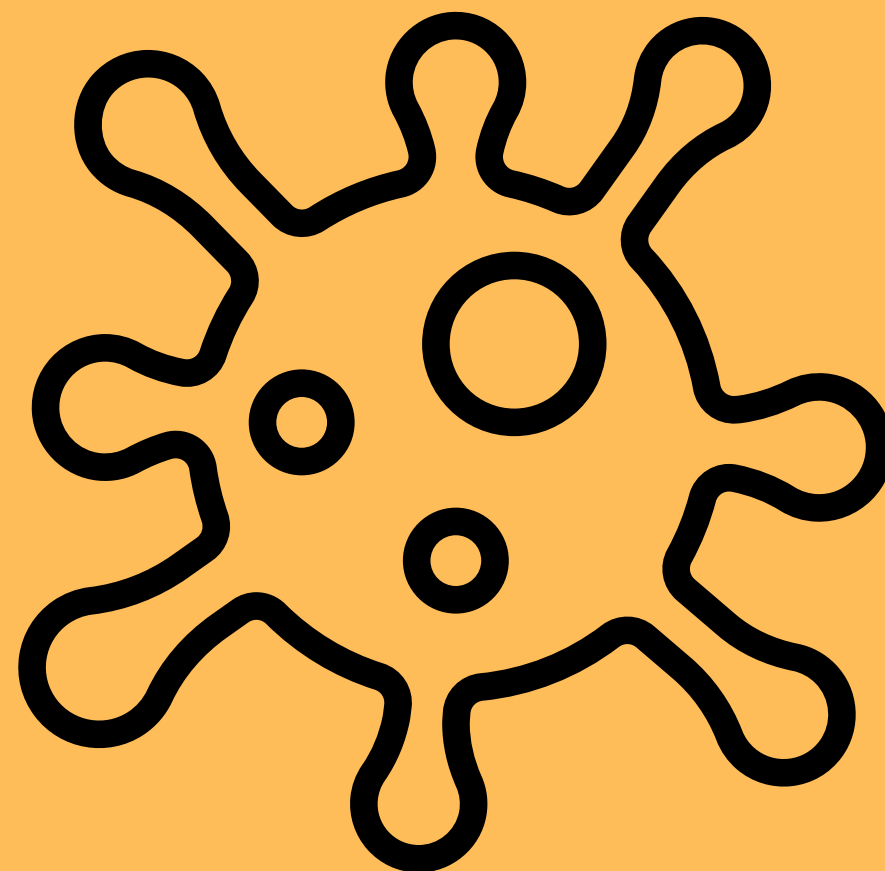
**AGILE ON THE BEACH 2024**



# **Product Lessons From Teaching The World To Type**

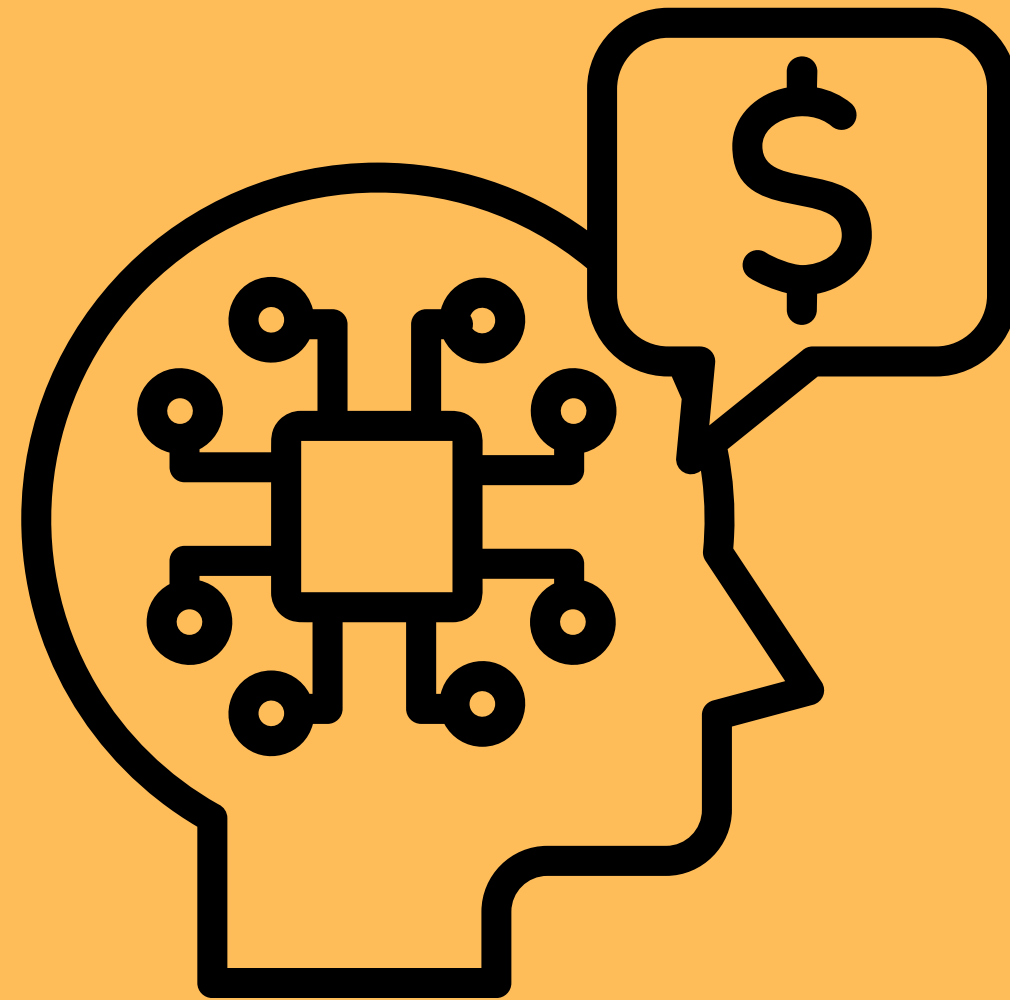
Daniel Merriman - Coach, Product Person,  
Engineering Manager (and about 700 other things)



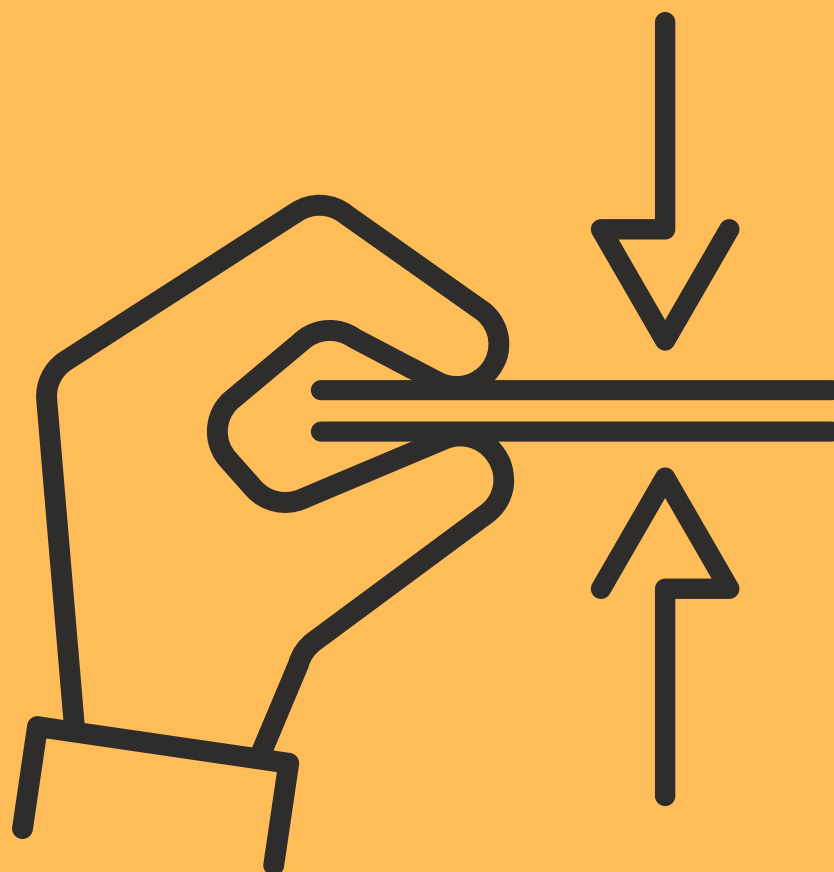












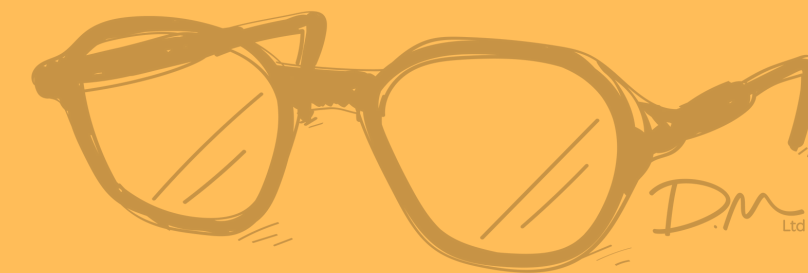


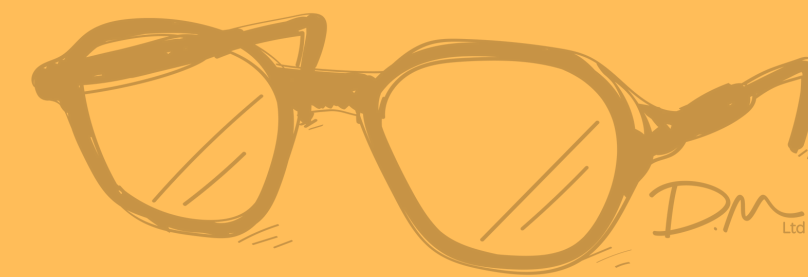
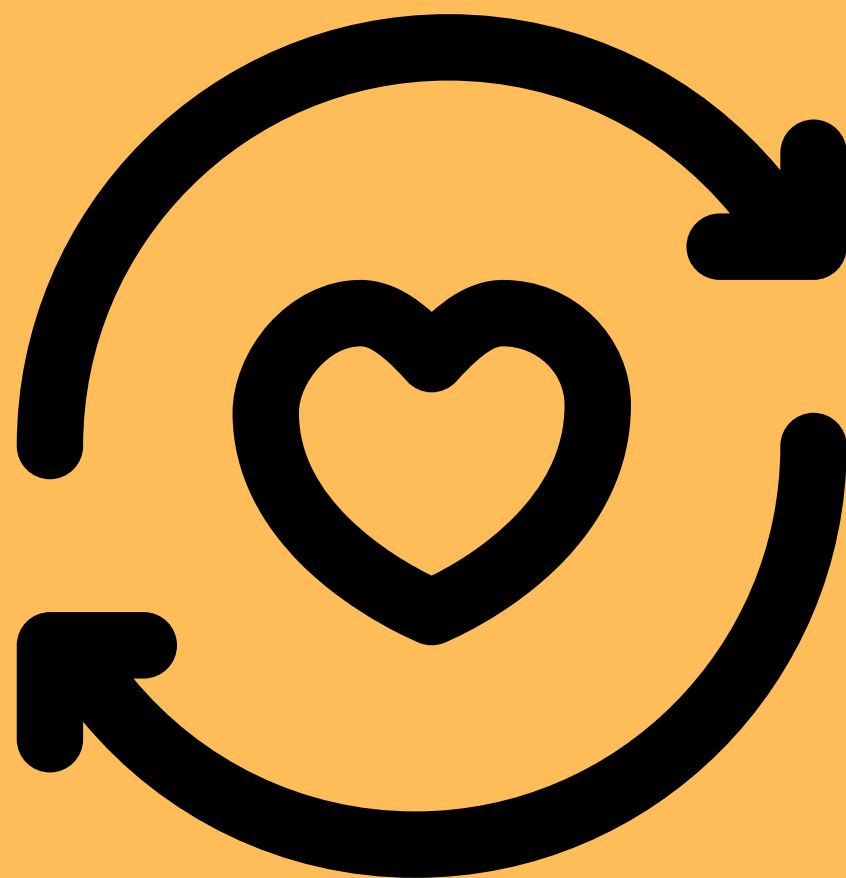






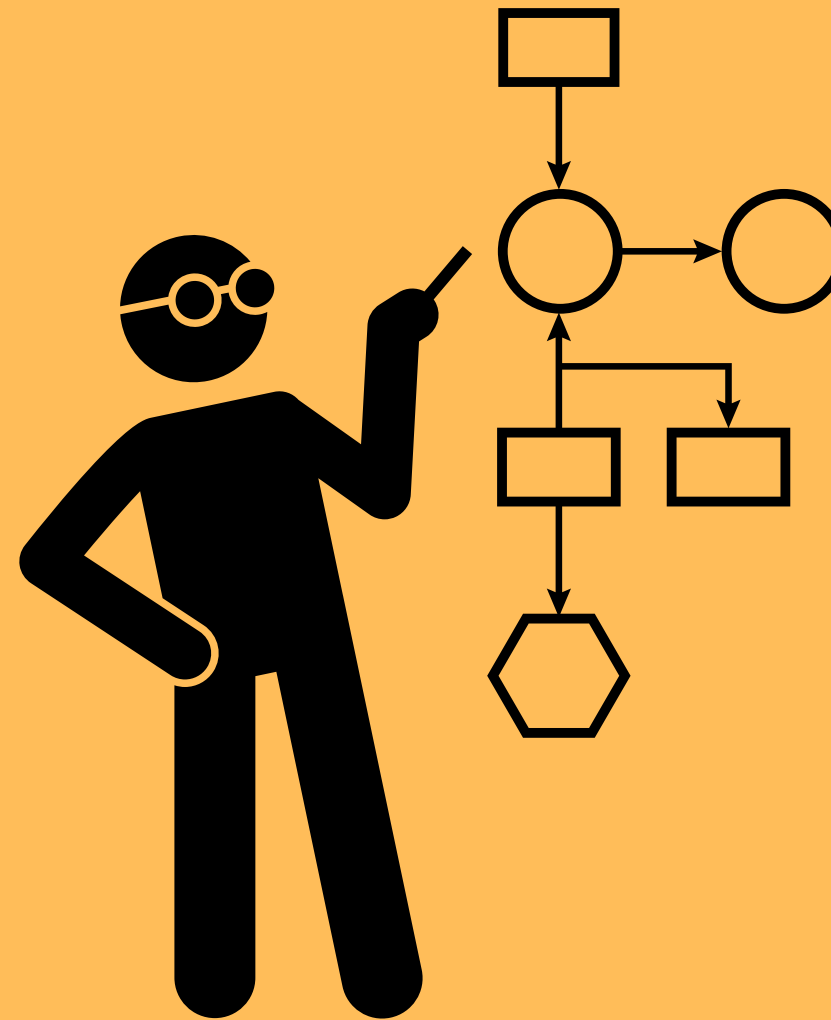






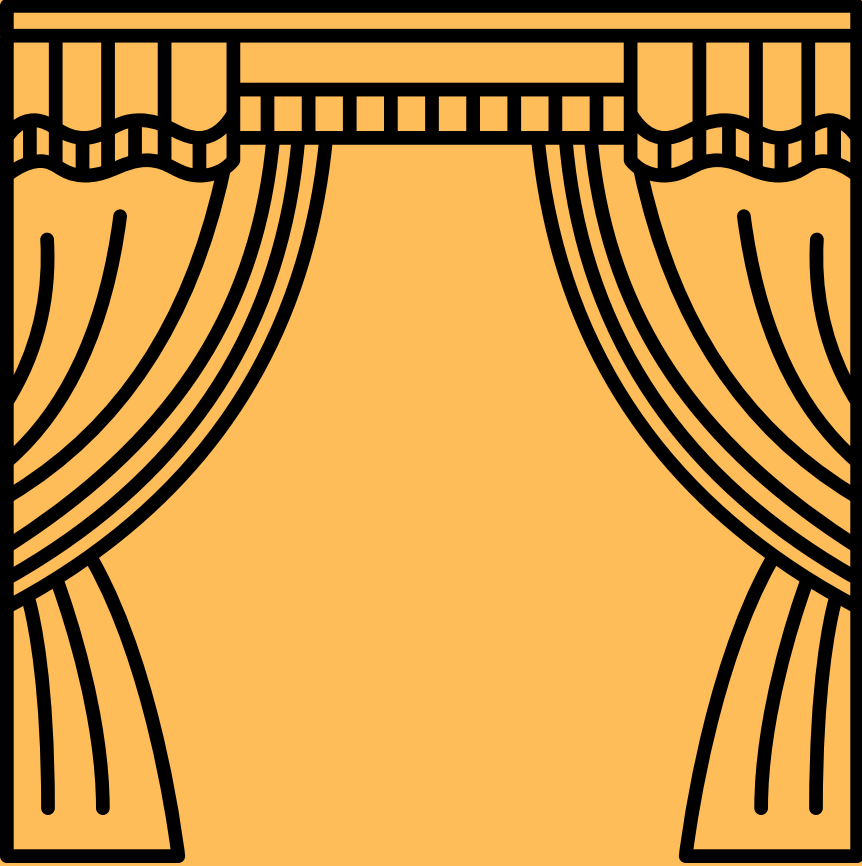






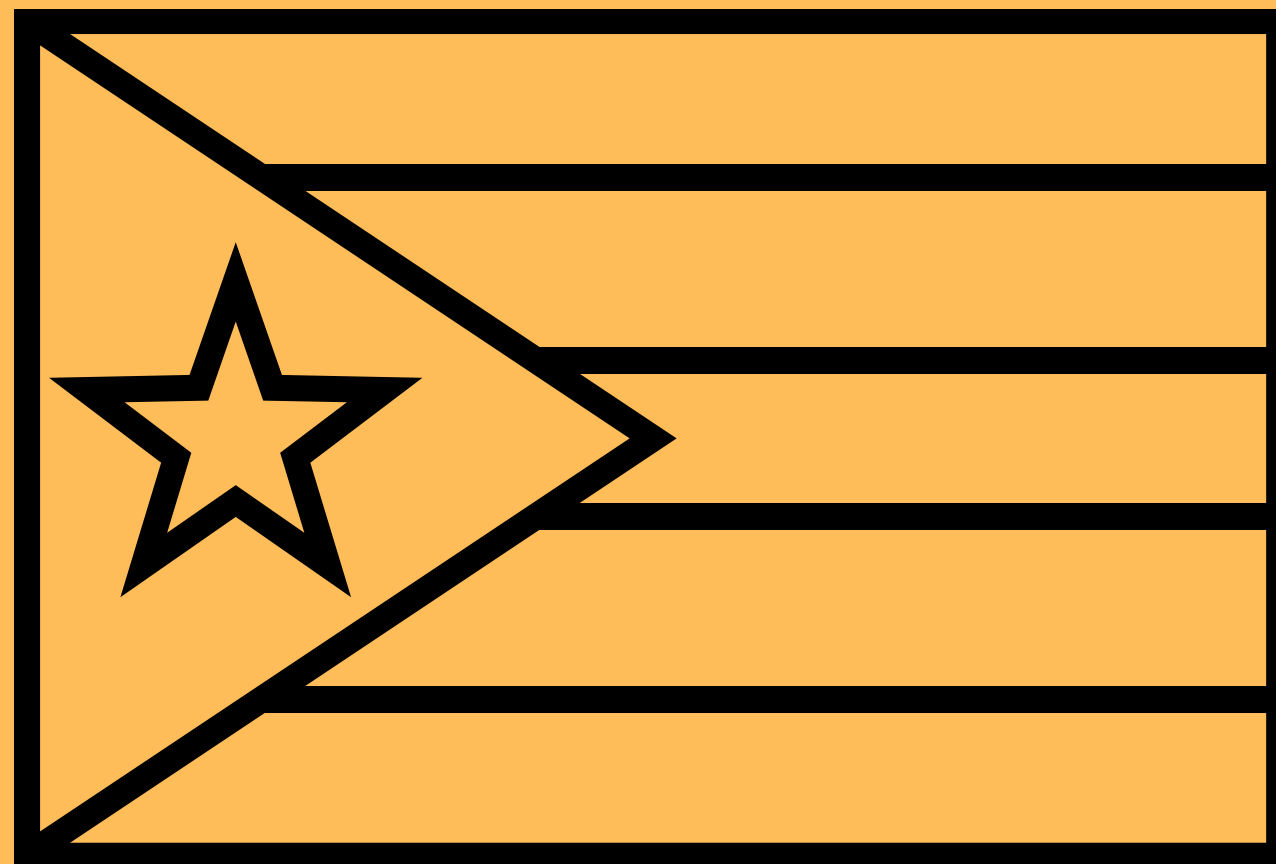






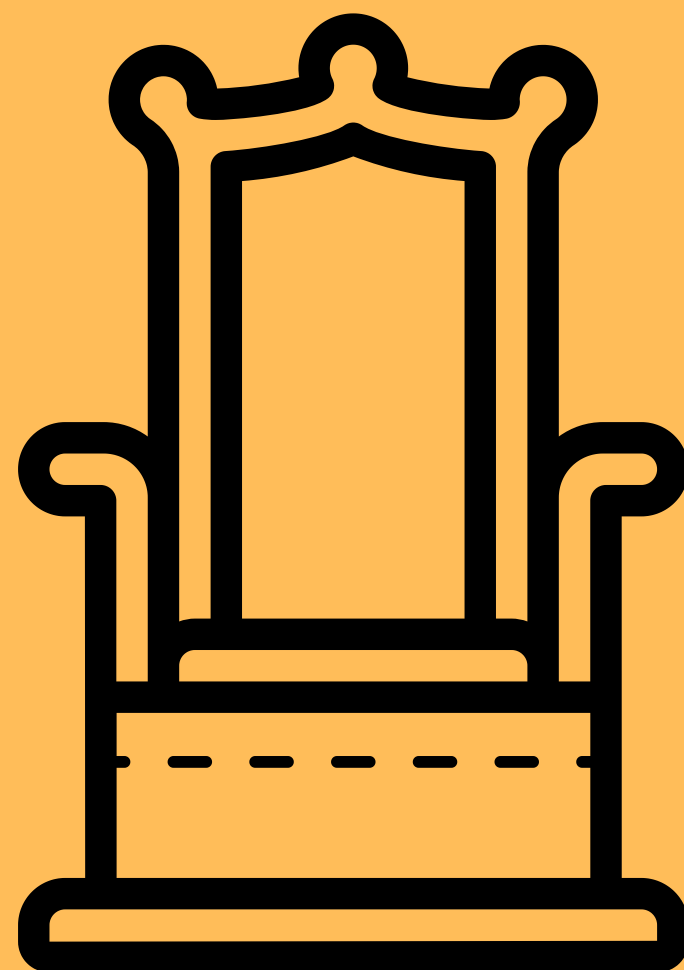




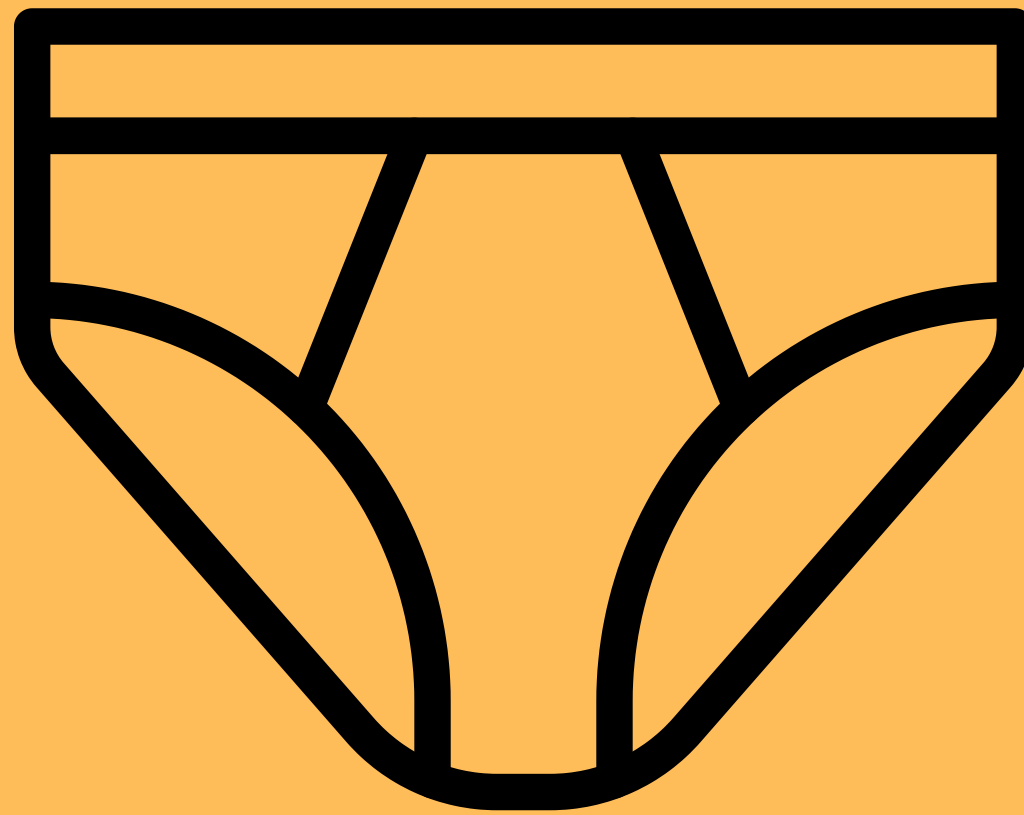






















$y = \frac{\Delta x}{\Delta z}$   
 $(x-y)^2$

$\phi = \sqrt{\frac{\sum (x-m)^2}{n-1}}$      $\int (x \pm a)^c$      $Q'' S = \begin{bmatrix} 1 & 0 & 0 \\ 1 & 0 & 1 \\ 0 & 0 & 1 \end{bmatrix}$      $\pi \approx 3,14$

$\lim_{x \rightarrow 1} \frac{\text{ctgx} - 2}{2\sqrt{1-x^3}}$      $P = r^2 \frac{1}{11}$      $\ln = \sqrt{a \cdot b}$

$4x = 8 - 3y^2$      $e = 2,79$

$B \sum = n-1$      $y = 2x^2 + 3x$      $P = \sum_{i=0}^{\infty} x^i$      $\frac{A-C}{C}$

$\sin \alpha$      $\tan(2\alpha) = \frac{2 \tan(\alpha)}{1 - \tan^2(\alpha)}$      $15 \Delta t = T - \frac{3a}{x}$

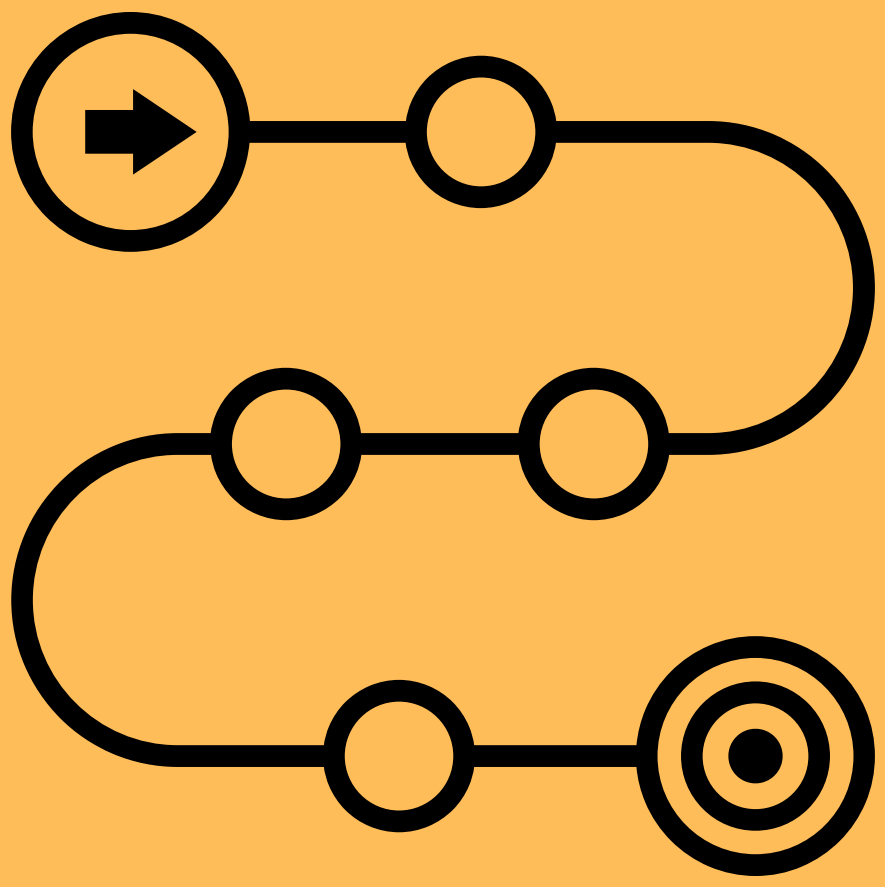
$(x+y)^2 = \left(\frac{y}{2}\right)^2 = x^2 + 2ax + a^2$      $\ln x \left(\frac{a-\sqrt{x^2}}{x}\right) + C$      $\sum_{n=0}^{\infty} \frac{x^n}{n!}$

$x^2 + y^2 = 2$      $\frac{\Delta x}{\Delta y} = \lim_{\Delta y \rightarrow 0} \frac{\Delta x + 2}{\Delta y - 1}$

$(x+a) \sin x$      $e = \cos x + \text{tg } y$      $\int \frac{\sqrt{x+a^2}}{x}$      $X_{1/2} = \frac{b \pm (a-c)}{\sqrt{a}}$

$= (y-1)^2$      $a+b=c$      $\sin \alpha = \frac{b^3}{(x+h)}$      $S = \int_{t=2}^{10} 5t dt = \frac{\Delta x}{\Delta z} x$

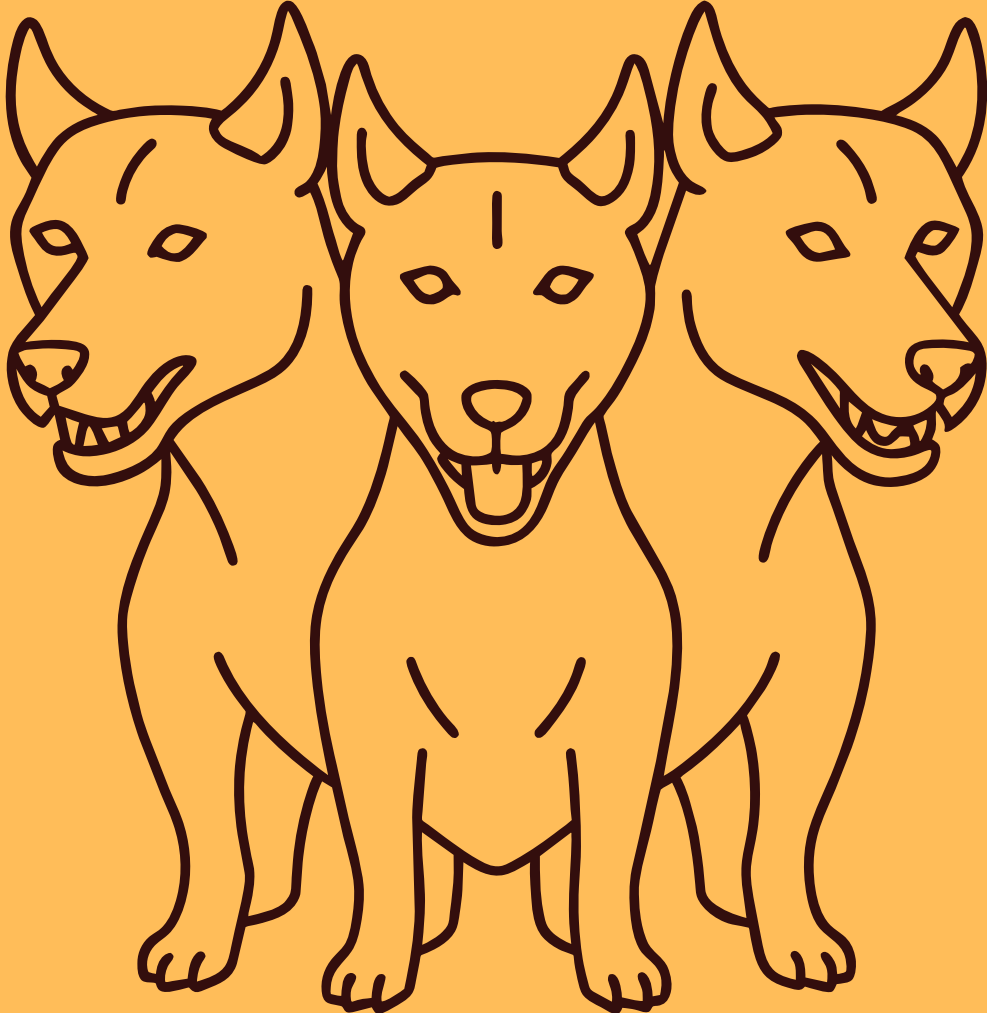










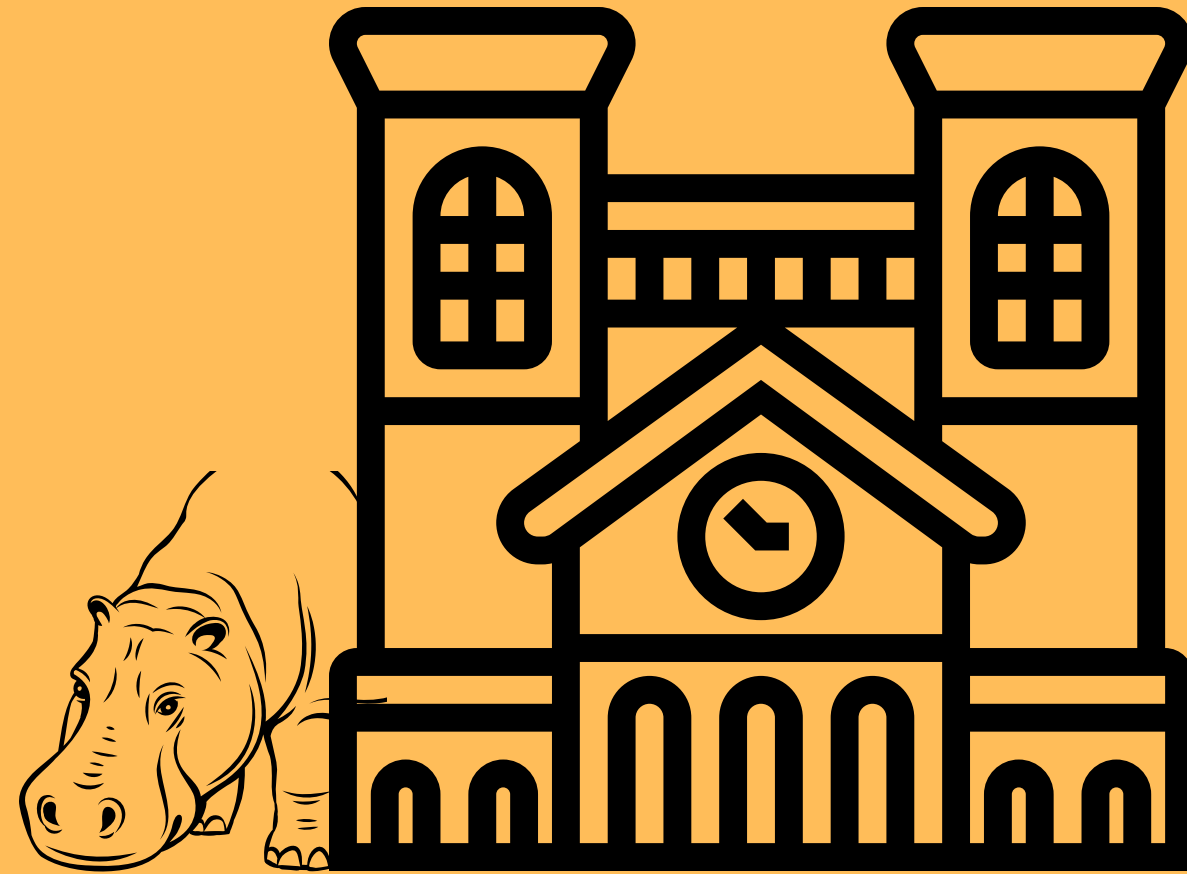






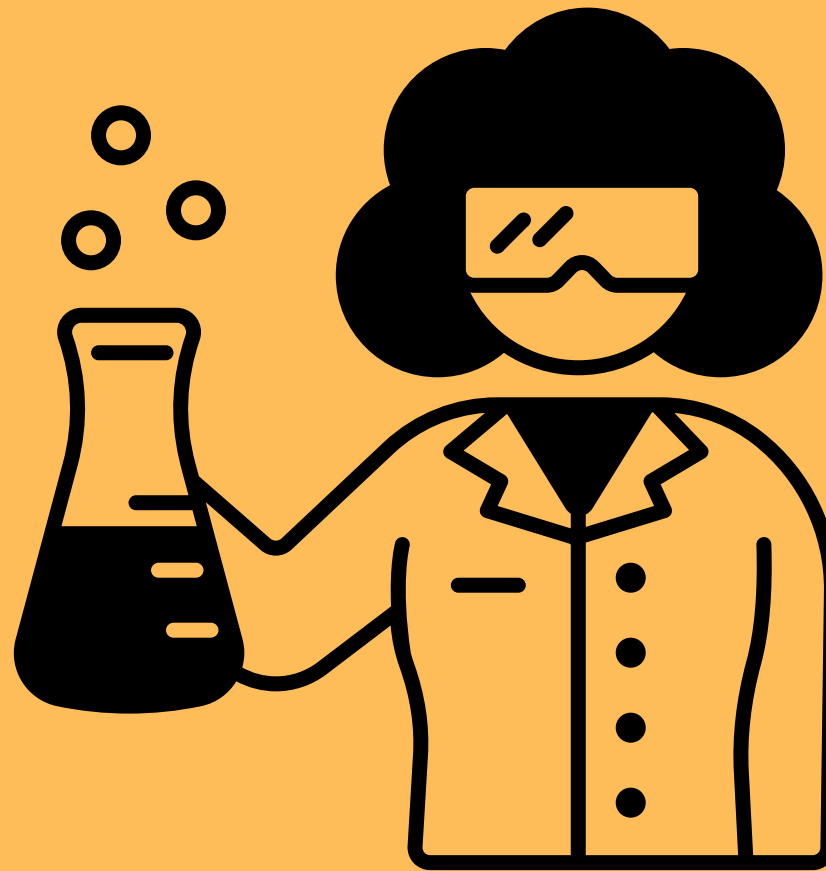








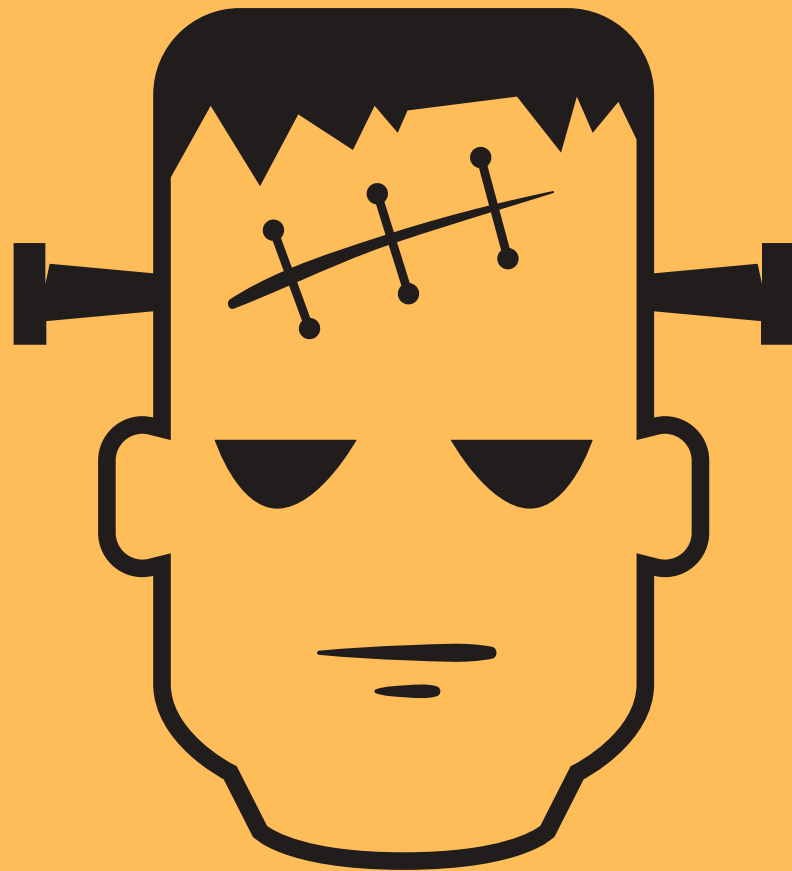








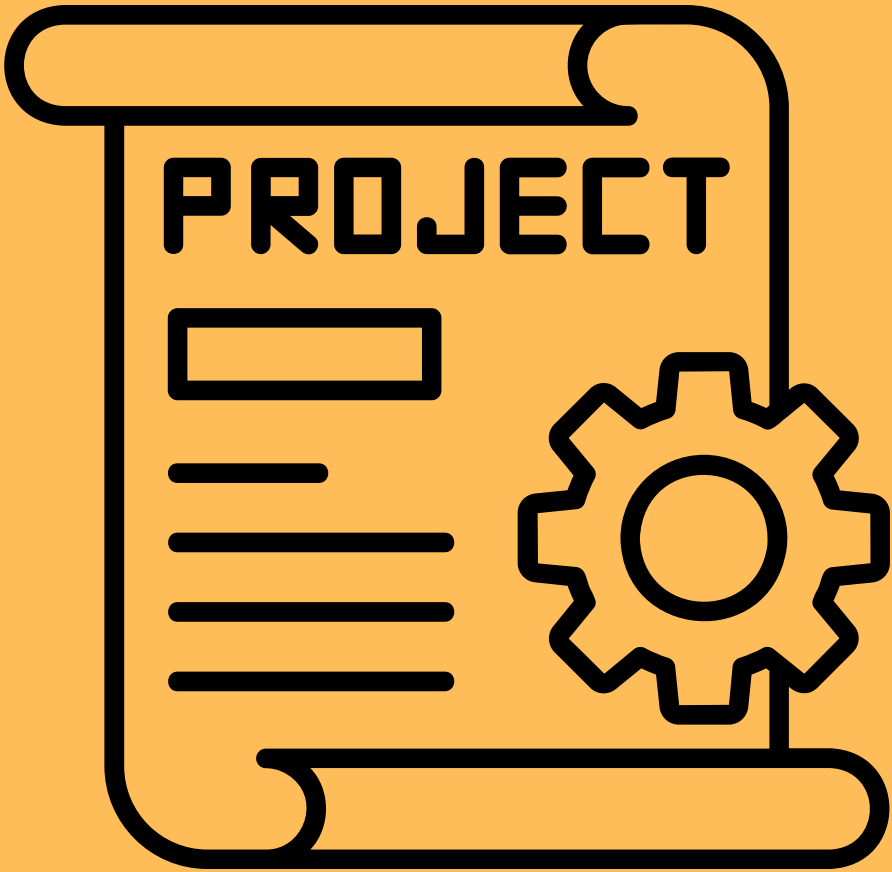






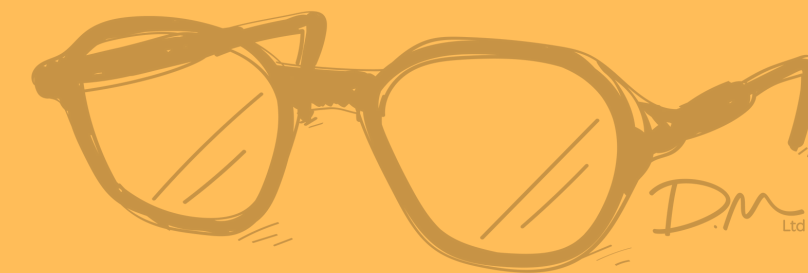






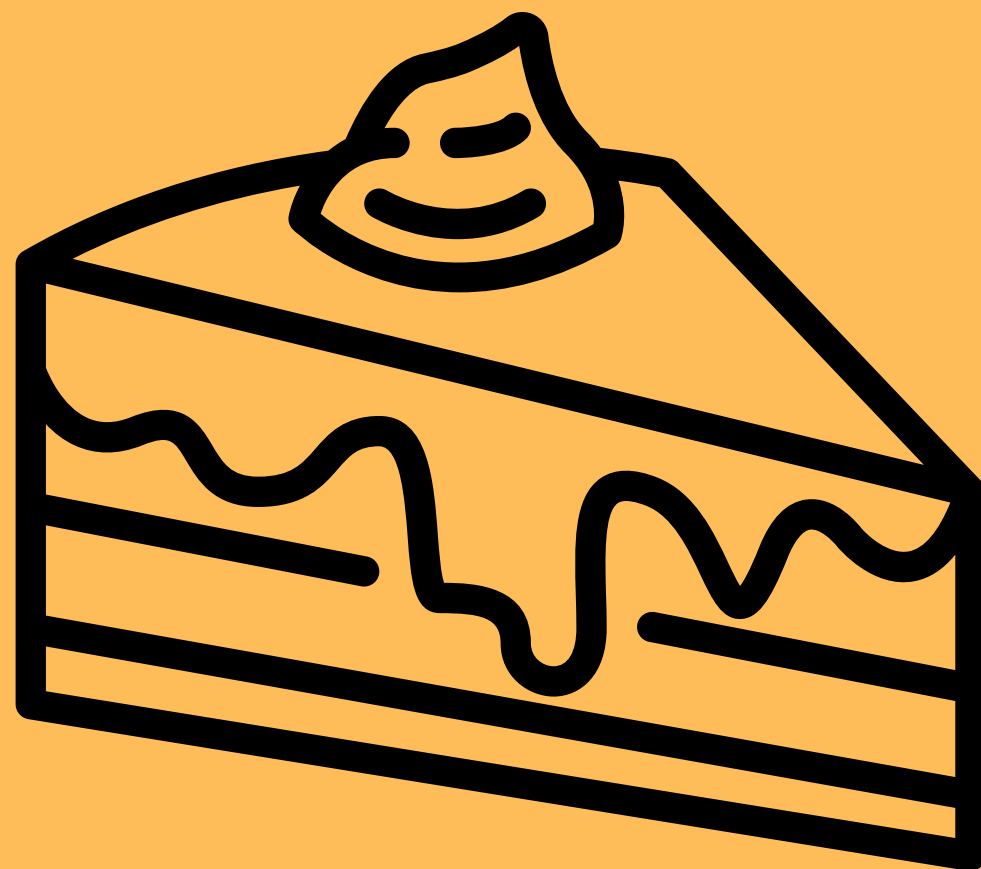


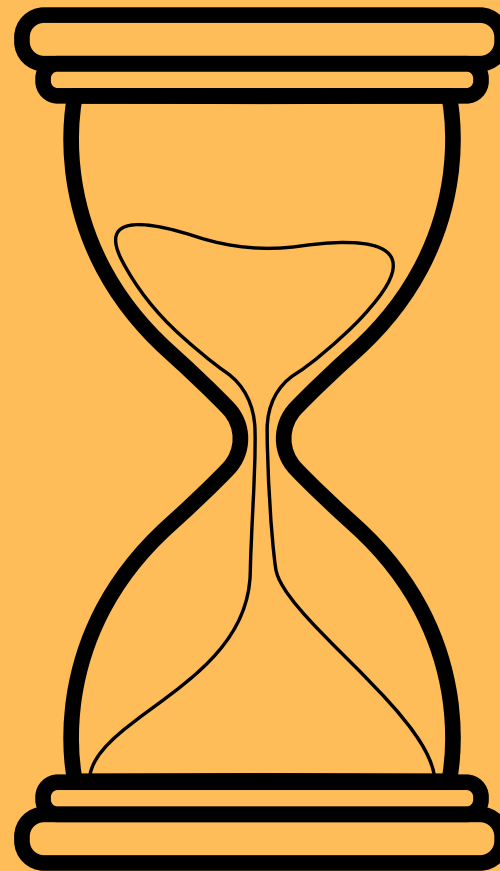






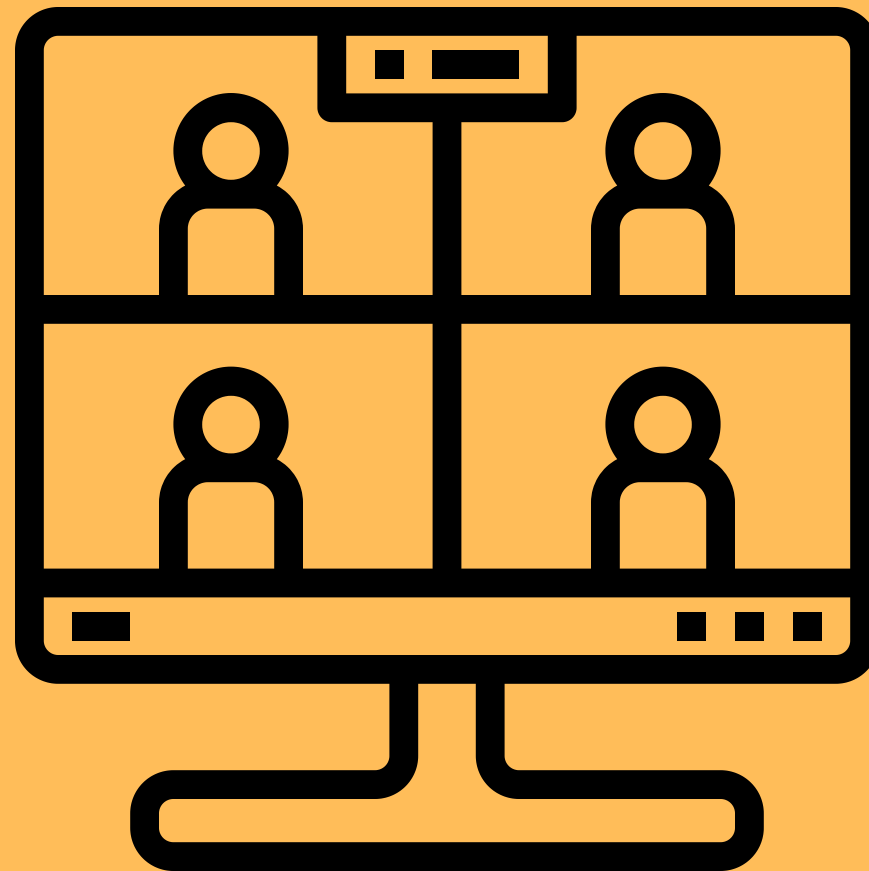


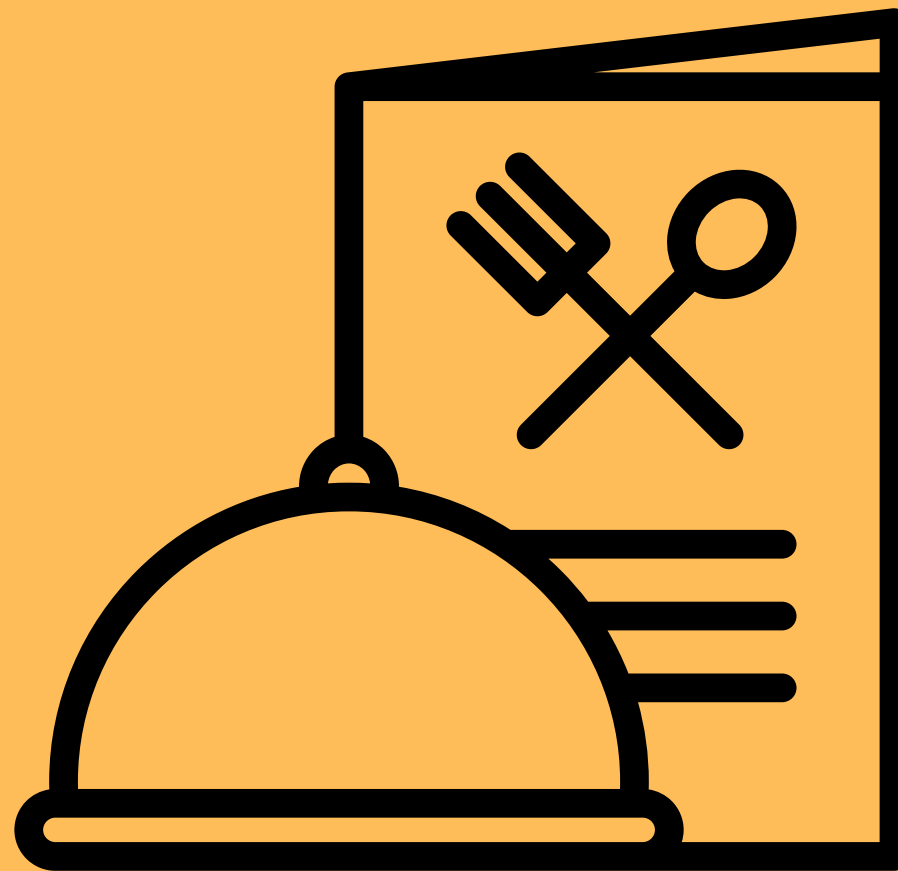




















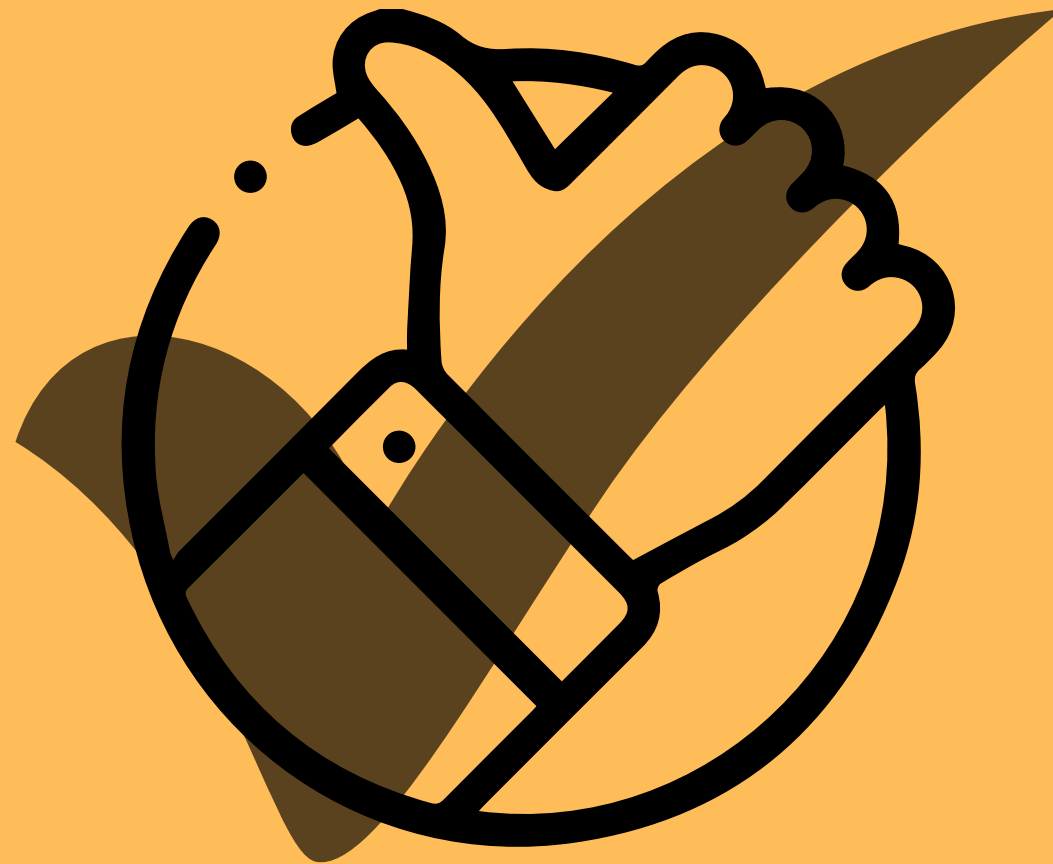








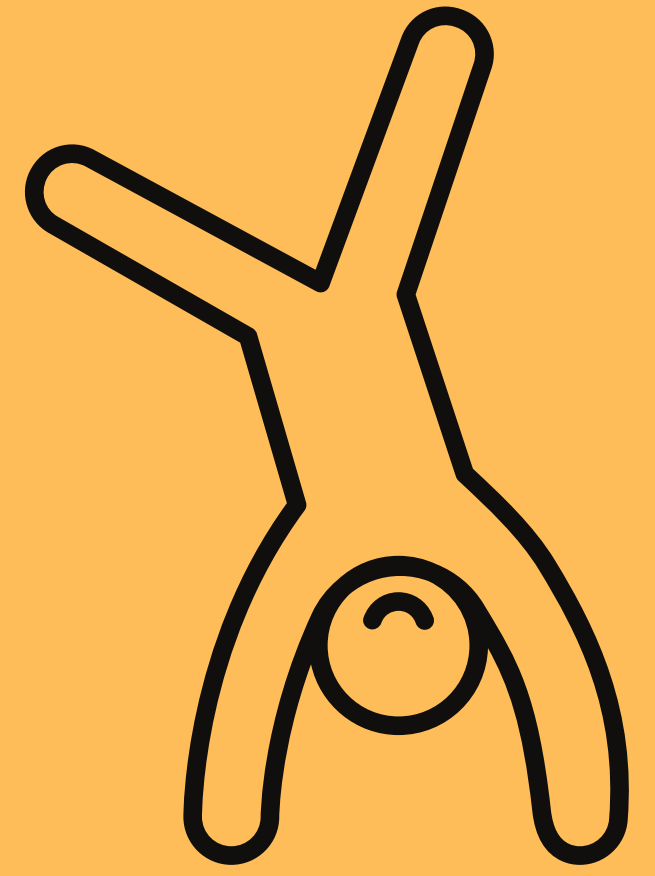
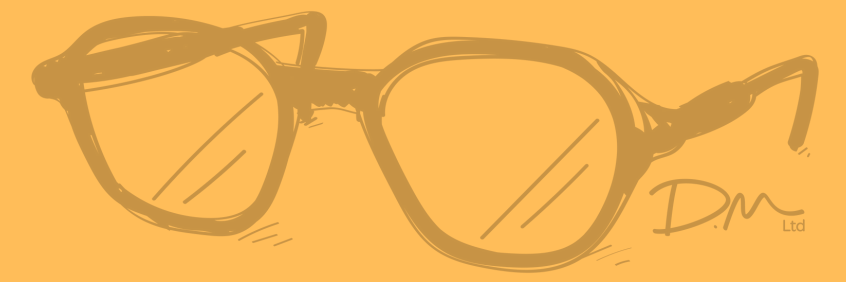






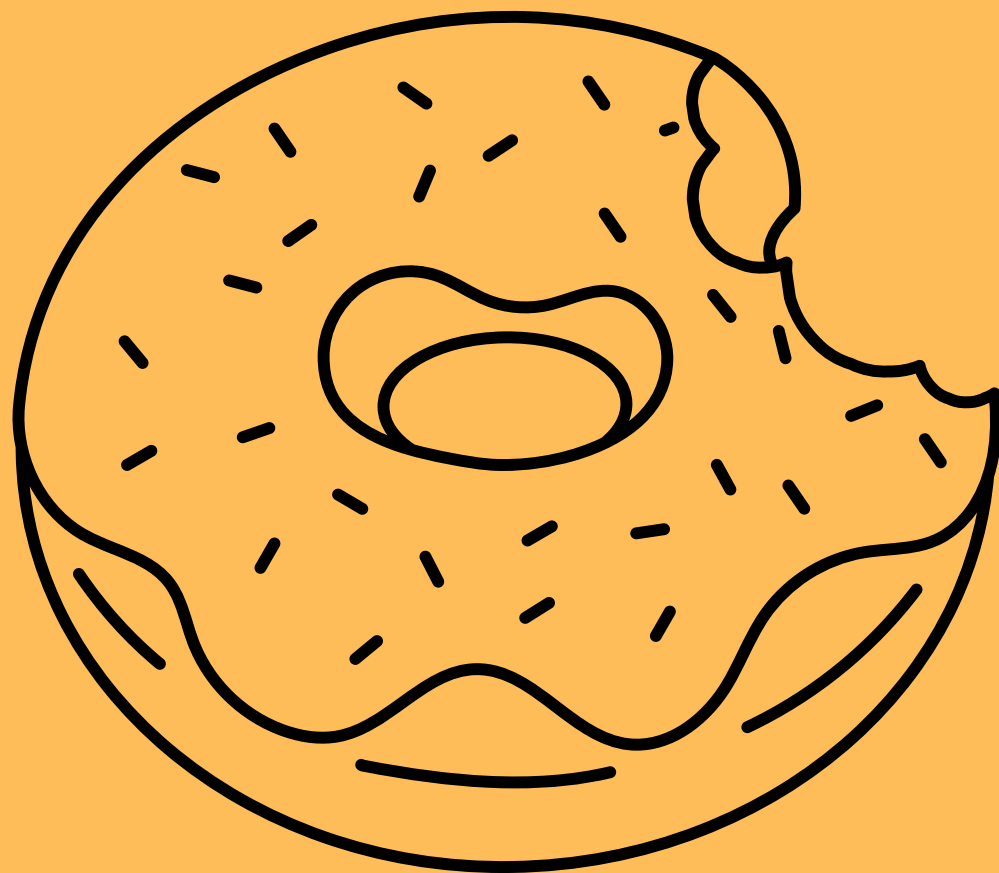












**DON'T FORGET TO LIKE,  
SUBSCRIBE, AND LEAVE  
A COMMENT**

**WEBSITE**

[danielmerriman.com](http://danielmerriman.com)

**LINKEDIN**

[/in/danielmerriman](https://www.linkedin.com/in/danielmerriman)

**EMAIL**

[hello@danielmerriman.com](mailto:hello@danielmerriman.com)

